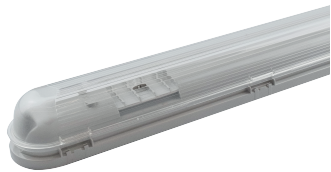


## MANUALE D'ISTRUZIONI PLAFONIERA STAGNA LED T8 IP65 (TUBO NON INCLUSO)



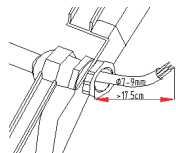
### Specifiche tecniche:

	MISURE	W	AC/Hz	WT(Kg)	CLIPS	TEMP. LAVORO	INSTALL.	IP	SCHERMO IK	CORPO IK	CLASSE
IP118T8	670*68*74mm	1x9W	AC220-240V Hz 50/60	0.7	8	-15°+45°	420±36mm	65	08	06	I
IP218T8	670*104*74mm	2x9W	AC220-240V Hz 50/60	1.0	8	-15°+45°	420±36mm	65	08	06	I
IP136T8	1270*68*74mm	1x18W	AC220-240V Hz 50/60	1.2	14	-15°+45°	900±36mm	65	08	06	I
IP236T8	1270*104*74mm	2x18W	AC220-240V Hz 50/60	1.8	14	-15°+45°	900±36mm	65	08	06	I
IP158T8	1570*68*74mm	1x24W	AC220-240V Hz 50/60	1.4	18	-15°+45°	1200±36mm	65	08	06	I
IP258T8	1570*104*74mm	2x24W	AC220-240V Hz 50/60	2.1	18	-15°+45°	1200±36mm	65	08	06	I

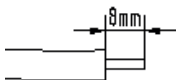
### Alimentazione monolaterale

Corpo in ABS, Diffusore V2 autoestinguente e Anti-UV in policarbonato resistente alla prova del filo incandescente per 850°C, riflettore in ferro e clips in acciaio inox. Cavo consigliato: H05RN-3x1.0mm2/H07RN-3x1.0mm2 (non usare cavi in PVC).

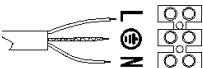
### IMPORTANTE



Serrare il pressacavo dopo l'installazione dell'alimentazione. Il cavo deve avere una lunghezza non inferiore a 17.5cm.

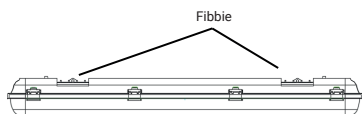


Il cavo nudo deve avere una lunghezza non inferiore a 8mm.

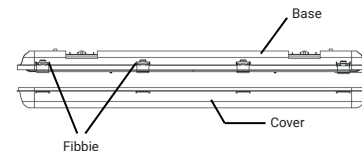


Collegare il cavo di alimentazione al terminale: Filo marrone a (L); filo blu a (N) e filo verde/giallo al centro. Nota: Il filo verde/giallo deve avere una lunghezza superiore agli altri.

### MONTAGGIO E SOSTITUZIONE TUBI:



1. Disconnettere il prodotto dall'alimentazione, aprire la lampada solamente dopo il suo completo raffreddamento.



2. Rimuovere il diffusore.

### ATTENZIONE

Si raccomanda di rivolgersi a un elettricista qualificato per installare il prodotto.

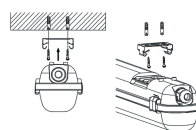
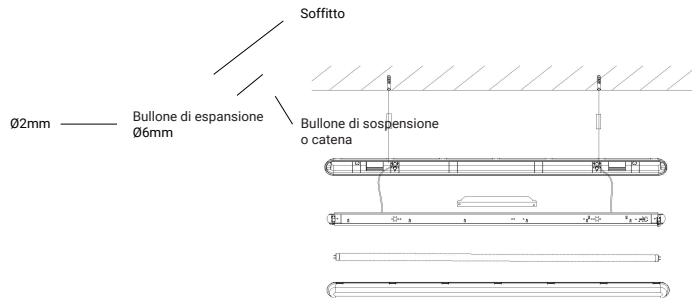
Si raccomanda di non toccare il prodotto quando è acceso.

In caso di malfunzionamento, staccare la lampada dall'alimentazione.

Si raccomanda di rivolgersi a un elettricista e di non provare a riparare la lampada da soli.

### MONTAGGIO

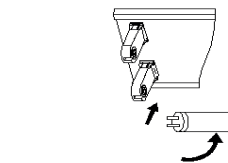
Se si installa il prodotto a sospensione, tramite catena o bullone di sospensione, assicurarsi che il dado sia ben avvitato per evitare l'infiltrazione d'acqua.



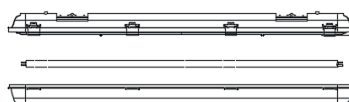
Installazione a soffitto



Blocco e sblocco clip

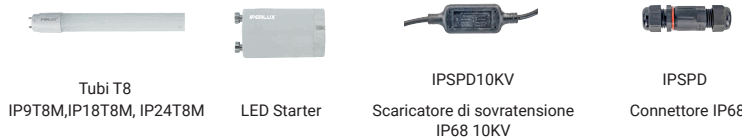


3. Installare il tubo: inserirlo nel portalampade e ruotarlo di 90°.



4. Chiudere lo schermo e le clip prima di accendere il prodotto.

### ACCESSORI COMPATIBILI (non inclusi):



### Informazioni sul riciclaggio in conformità con le direttive RAAE e batterie



Simbolo sul prodotto



Simbolo sulla batteria

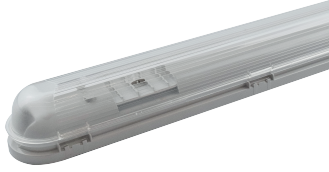
Solo Europa

Il prodotto/batteria è contrassegnato con uno dei simboli di riciclaggio sopra indicati. Questo indica che a fine vita il prodotto/batteria, dovrà essere smaltito/a separatamente in appropriati luoghi di raccolta e non con i normali rifiuti domestici.



## INSTRUCTION MANUAL

LED CEILING LAMP T8 IP65  
(TUBE NOT INCLUDED)



It is recommended to contact a qualified electrician to install the product.

It is recommended not to touch the product when it is turned on.

In case of malfunction, disconnect the lamp from the power supply.

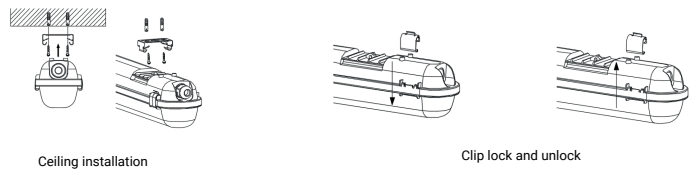
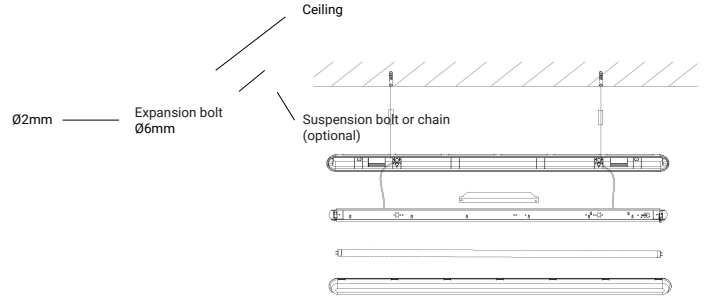
It is recommended to contact an electrician and not try to repair the lamp yourself.

## MOUNTING

When install the suspension bolt or chain, nut must be tight, to avoid water seeping,

### Specification and Technical Data Sheet:

	SIZE	W	AC/Hz	WT(Kg)	CLIPS	AMB. TEMP.	INSTALL.	IP	COVER IK	BODY IK	CLASS
IP118T8	670*68*74mm	1x9W	AC220-240V Hz 50/60	0.7	8	-15°+45°	420±36mm	65	08	06	I
IP218T8	670*104*74mm	2x9W	AC220-240V Hz 50/60	1.0	8	-15°+45°	420±36mm	65	08	06	I
IP136T8	1270*68*74mm	1x18W	AC220-240V Hz 50/60	1.2	14	-15°+45°	900±36mm	65	08	06	I
IP236T8	1270*104*74mm	2x18W	AC220-240V Hz 50/60	1.8	14	-15°+45°	900±36mm	65	08	06	I
IP158T8	1570*68*74mm	1x24W	AC220-240V Hz 50/60	1.4	18	-15°+45°	1200±36mm	65	08	06	I
IP258T8	1570*104*74mm	2x24W	AC220-240V Hz 50/60	2.1	18	-15°+45°	1200±36mm	65	08	06	I



Ceiling installation

Clip lock and unlock

1

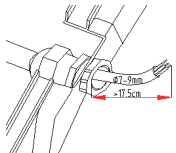
2

Power in one side

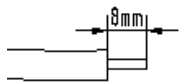
Body in ABS, ANTI-UV and V2 Self-extinguishing PC cover, glow wire tested at 850°C, iron reflector and stainless steel clips.

Recommended cable: H05RN-3x1.0mm2/H07RN-3x1.0mm2 (don't use PVC cables).

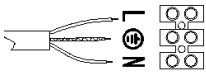
### ⚠ IMPORTANT



The screw gland must be tightened after install the power cord. The length of the main cable put into the lamp shder through the gland no less than 17.5cm.

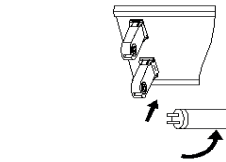


Bare conductor length 8mm.

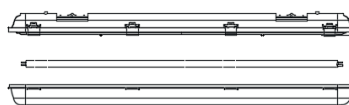


Connect supply lead with terminal:  
Brown wire to (L); Blue wire to (N) and Green/Yellow in the middle.

Note: the Green/Yellow lead must be longer than brown and blue lead.

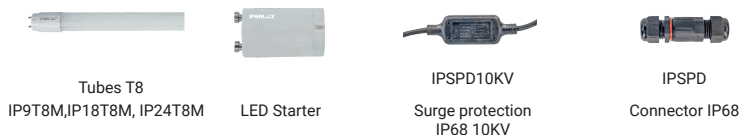


3. Install the tube: insert it into the lamp holder and rotate it 90°.

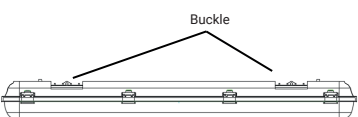


4. Close the screen and clips before turning on the product.

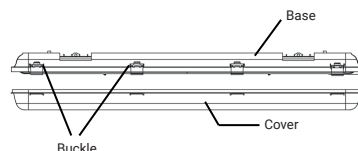
### SUITABLE ACCESSORIES (not included):



### INSTALL AND REPLACEMENT OF THE TUBES:

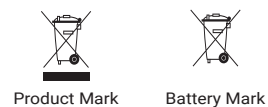


1. Disconnect the product from the power supply, open the lamp only after it has completely cooled.



2. Remove the diffuser.

### Recycling Information in Accordance with the WEEE and Battery Directives



Europe Only

The product/battery is marked with one of the above recycling symbols. It indicates that at the end of the life of the product/battery, you should dispose of it separately at an appropriate collection point and not place it in normal domestic waste stream.

